

# ALT



**ELECTROMECHANICAL ROAD BARRIER  
WITH DOUBLE BUILT-IN FLASHING LIGHT**





For intensive use, for private and public solutions

Anti-UV polyester powder coating

Double built-in flashing light, two-coloured green/red

Robust gears and levers for reliable functioning over time

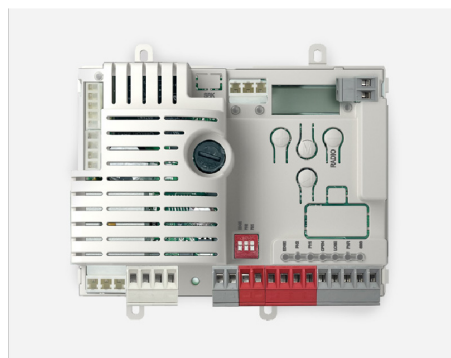
Universal housing: boom arm can be installed both right or left

Encoder for obstacle detection and immediate run inversion



## NEW CONTROL UNIT CT10324

+ **CT10324** New 5-character / 16-segment display for more natural and intuitive reading



### MODELS

| CODE    | DESCRIPTION   | WEIGHT | PCS PALLET |
|---------|---|--------|------------|
| ALT3F   | Barrier body, 24 Vdc motor, with control unit in box, with integrated receiver, with encoder, double built-in led flashing light. For 3 m bar, connection for bars included, with CT10224F board. | 47 kg  | 8          |
| ALT424K | Barrier body, 24 Vdc motor, with control unit in box, with integrated receiver, with encoder, double built-in led flashing light. For 4 m bar, connection for bars included, with CT10224 board.  | 47 kg  | 8          |
| ALT624K | Barrier body, 24 Vdc motor, with control unit in box, with integrated receiver, with encoder, double built-in led flashing light. For 6 m bar, connection for bars included, with CT10224 board.  | 67 kg  | 5          |

| CODE  | DESCRIPTION  | WEIGHT | PCS PALLET |
|-------|--|--------|------------|
| ALT4K | Barrier body, 24 Vdc motor, with control unit in box, with integrated receiver, with encoder, double built-in led flashing light. For 4 m bar, connection for bars included, with new CT10324 board. | 47 kg  | 8          |
| ALT6K | Barrier body, 24 Vdc motor, with control unit in box, with integrated receiver, with encoder, double built-in led flashing light. For 6 m bar, connection for bars included, with new CT10324 board. | 67 kg  | 5          |

## TECHNICAL DATA

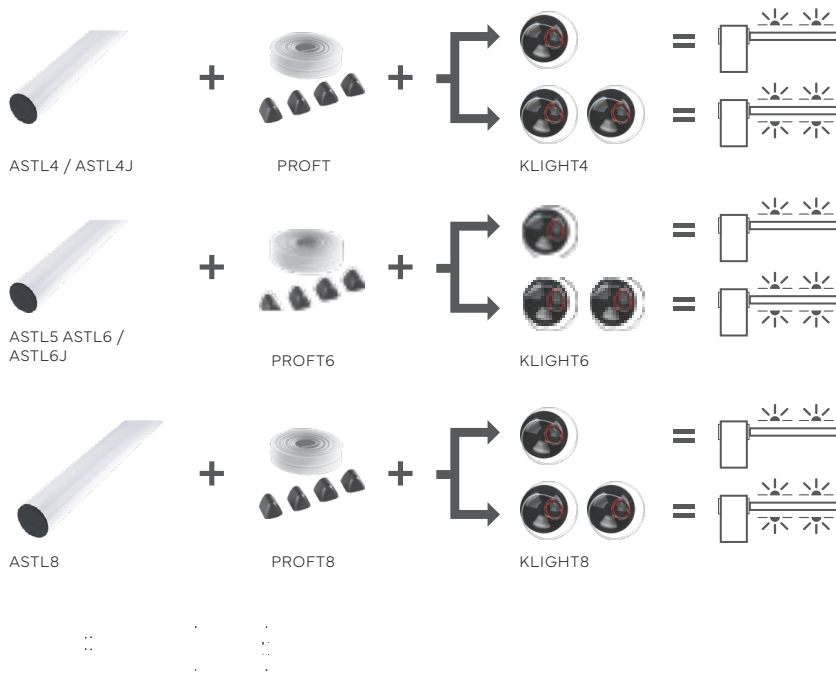
|                         |     | ALT324KF         | ALT424K          | ALT6K            |
|-------------------------|-----|------------------|------------------|------------------|
| <b>MECHANICAL DATA</b>  |     |                  |                  |                  |
| torque                  | Nm  | 40               | 200              | 305              |
| cycles/hour             |     | 500              | 410              | 240 / 120***     |
| opening time at 90° **  | sec | 1                | 3,5              | 6/12***          |
| <b>ELECTRICAL DATA</b>  |     |                  |                  |                  |
| control unit            |     | CT10224F         | CT10224          | CT10324          |
| automation power supply | Vac | 230              | 230              | 230              |
| frequency               | Hz  | 50/60            | 50/60            | 50/60            |
| motor power supply      | Vdc | 24               | 24               | 24               |
| rated power             | W   | 30               | 40               | 40               |
| maximum input power     | W   | 60               | 90               | 100              |
| integrated lights       |     | yes              | yes              | yes              |
| <b>GENERIC DATA</b>     |     |                  |                  |                  |
| protection degree       | IP  | 54               | 54               | 54               |
| dimensions (L - D - H)  | mm  | 400 - 280 - 1188 | 320 - 220 - 1110 | 400 - 280 - 1188 |
| weight                  | kg  | 62               | 47               | 67               |
| working temperature     | °C  | -20 + 55         | -20 + 55         | -20 + 55         |
| maximum boom arm length | m   | 3                | 4 (5*)           | 6 (8*)           |

\* partially equipped

\*\* without accessories

\*\*\*with 8 m bar

## HOW TO CHOOSE THE LED LIGHT SYSTEM FOR BARRIERS



## DIMENSIONS

| BOOM ARM | CODE             | CLEAR OPENING (LP) |
|----------|------------------|--------------------|
| 3 m      | ALT324KF + AST3F | 2740 mm            |
| 4 m      | ALT424K + ASTL4  | 3780 mm            |
| 4 m      | ALT424K + ASTL4J | 3780 mm            |
| 5 m      | ALT424K + ASTL5  | 4780 mm            |
| 6 m      | ALT6K + ASTL6    | 5640 mm            |
| 6 m      | ALT6K + ASTL6J   | 5640 mm            |
| 8 m      | ALT6K + ASTL8    | 8040 mm            |

## ALT3KF ACCESSORIES



**AST3F** 3 m aluminum boom arm, Ø 40 mm

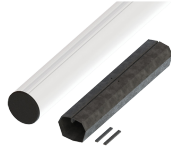


**CP-BR6** Anchorage plate with rag bolts

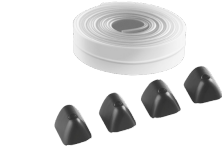
## ALT4K ACCESSORIES



**ASTL4J** 2+2 m aluminum boom arm, Ø 60 mm + joint



**ASTL6J** 3+3 m aluminum boom arm, Ø 90 mm + joint



**PROFT** Flexible rubber profile, 8m and plug set (transparent)



**CP-BR4** Anchorage plate with rag bolts



**AS-SN03** Bar with articulated joint kit (max L. 3m) pre-assembled

\* for ASTL6J the combining of PROFT6, KLIGHT6 and APFX is recommended

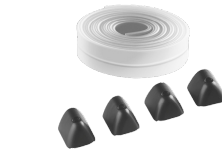
## ALT6K ACCESSORIES



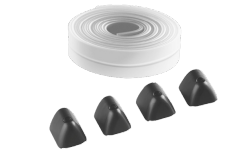
**ASTL6J** 3+3 m aluminum boom arm, Ø 90 mm + joint



**ASTL8** \*\* 4,2+4,2 m aluminum boom arm, Ø 90 mm + joint + springs



**PROFT6** Flexible rubber profile, 12 m and plug set (transparent)



**PROFT8** Flexible rubber profile, 16 m and plug set (transparent)



**CP-BR6** Anchorage plate with rag bolts

\*\* for ASTL8 the combining of APFX is recommended



**APM** Mobile support RAL9010



**APFX** Fixed support RAL7047

## ACCESSORIES



**KLIGHT4,6,8** Led lights for 4m, 5-6 m and 6-8 m bar



**CTLIGHT2** Control unit for KLIGHT



**AD** Red reflecting adhesive stripes



**SKIRT2** Fence kit, 1,7m length



**VEK-MNH1-R24-C** Single channel magnetic loop detector



**VEK-MNH2-R24-C** Dual channel magnetic loop detector



**EGKTR1** Touch keyboard via radio (Rolling Code)



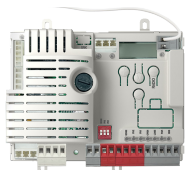
**SUB Remotes** 4 channel transmitter, XR rolling code 433MHz



**ANTS-433** Blade antenna to 433MHz with steel bracket and RG-58 cable L: 5000mm



**RXM23K** 2 channel universal receiver, fix or rolling code, 1000 codes



**CTI0324** Latest control unit for sliding gates and electromechanical barriers. Backward compatible with CTI0224.



**KUBEU** Bluetooth Low Energy module with two 5A relay outputs



**FT33** Pair of photocells for external use and flush mounting



**FT43** Pair of photocells for external use adjustable through 180°, for small pillars



**RP25K** Kit of reflective photocells for external use

# ALT ROAD BARRIER INSTALLS





**KEY AUTOMATION AUSTRALIA**

Unit 6 - 8 Cooper Street  
Smithfield NSW 2164 AUSTRALIA  
Ph. 1300 001 KEY - 1300 001 539  
info@keyautomation.com.au  
www.keyautomation.com.au



follow us:     