



For intensive use, for private and public solutions

Anti-UV polyester powder coating

Double built-in flashing light, two-coloured green/red

Robust gears and levers for reliable functioning over time

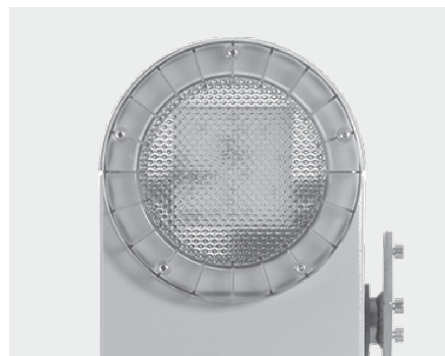
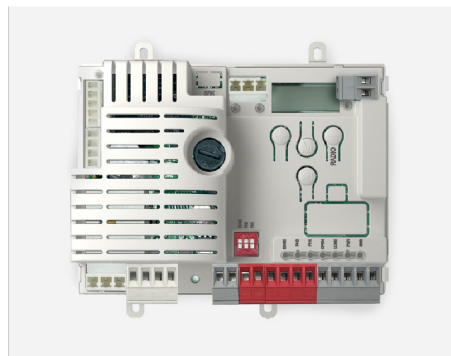
Universal housing: boom arm can be installed both right or left

Encoder for obstacle detection and immediate run inversion



NEW CONTROL UNIT CT10324

+ **CT10324** New 5-character / 16-segment display for more natural and intuitive reading



MODELS

CODE	DESCRIPTION	WEIGHT	PCS PALLET
ALT3F	Barrier body, 24 Vdc motor, with control unit in box, with integrated receiver, with encoder, double built-in led flashing light. For 3 m bar, connection for bars included, with CT10224F board.	47 kg	8
ALT424K	Barrier body, 24 Vdc motor, with control unit in box, with integrated receiver, with encoder, double built-in led flashing light. For 4 m bar, connection for bars included, with CT10224 board.	47 kg	8
ALT624K	Barrier body, 24 Vdc motor, with control unit in box, with integrated receiver, with encoder, double built-in led flashing light. For 6 m bar, connection for bars included, with CT10224 board.	67 kg	5

CODE	DESCRIPTION	WEIGHT	PCS PALLET
ALT4K	Barrier body, 24 Vdc motor, with control unit in box, with integrated receiver, with encoder, double built-in led flashing light. For 4 m bar, connection for bars included, with new CT10324 board.	47 kg	8
ALT6K	Barrier body, 24 Vdc motor, with control unit in box, with integrated receiver, with encoder, double built-in led flashing light. For 6 m bar, connection for bars included, with new CT10324 board.	67 kg	5

TECHNICAL DATA

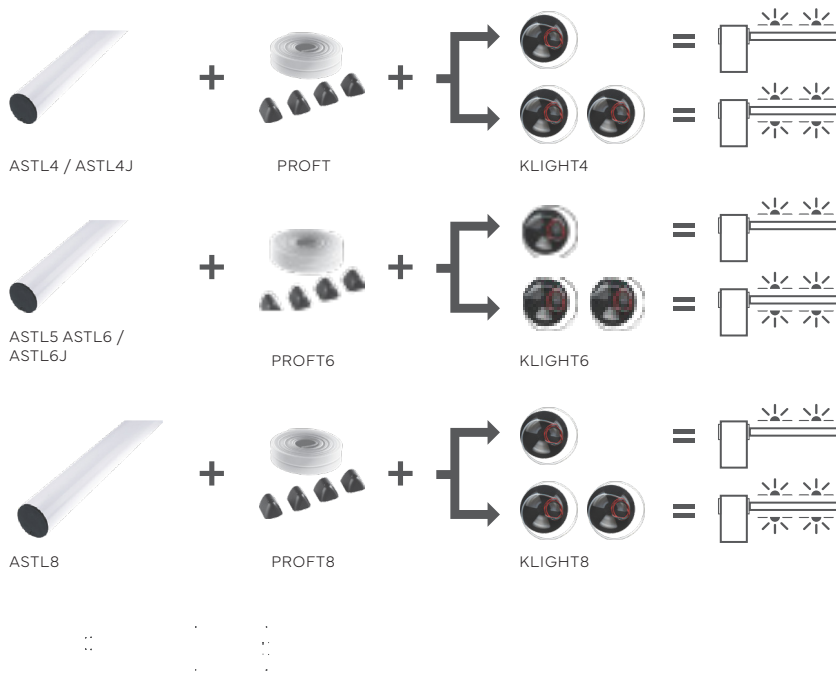
		ALT324KF	ALT424K	ALT6K
MECHANICAL DATA				
torque	Nm	40	200	305
cycles/hour		500	410	240 / 120***
opening time at 90° **	sec	1	3,5	6/12***
ELECTRICAL DATA				
control unit		CT10224F	CT10224	CT10324
automation power supply	Vac	230	230	230
frequency	Hz	50/60	50/60	50/60
motor power supply	Vdc	24	24	24
rated power	W	30	40	40
maximum input power	W	60	90	100
integrated lights		yes	yes	yes
GENERIC DATA				
protection degree	IP	54	54	54
dimensions (L - D - H)	mm	400 - 280 - 1188	320 - 220 - 1110	400 - 280 - 1188
weight	kg	62	47	67
working temperature	°C	-20 + 55	-20 + 55	-20 + 55
maximum boom arm length	m	3	4 (5*)	6 (8*)

* partially equipped

** without accessories

***with 8 m bar

HOW TO CHOOSE THE LED LIGHT SYSTEM FOR BARRIERS



DIMENSIONS

BOOM ARM	CODE	CLEAR OPENING (LP)
3 m	ALT324KF + AST3F	2740 mm
4 m	ALT424K + ASTL4	3780 mm
4 m	ALT424K + ASTL4J	3780 mm
5 m	ALT424K + ASTL5	4780 mm
6 m	ALT6K + ASTL6	5640 mm
6 m	ALT6K + ASTL6J	5640 mm
8 m	ALT6K + ASTL8	8040 mm

ALT3KF ACCESSORIES



AST3F 3 m aluminum boom arm, Ø 40 mm

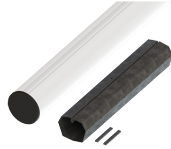


CP-BR6 Anchorage plate with rag bolts

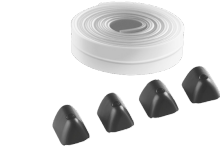
ALT4K ACCESSORIES



ASTL4J 2+2 m aluminum boom arm, Ø 60 mm + joint



ASTL6J 3+3 m aluminum boom arm, Ø 90 mm + joint



PROFT Flexible rubber profile, 8m and plug set (transparent)



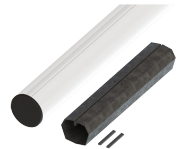
CP-BR4 Anchorage plate with rag bolts



AS-SN03 Bar with articulated joint kit (max L. 3m) pre-assembled

* for ASTL6J the combining of PROFT6, KLIGHT6 and APFX is recommended

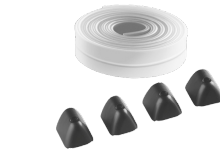
ALT6K ACCESSORIES



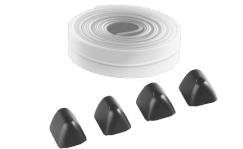
ASTL6J 3+3 m aluminum boom arm, Ø 90 mm + joint



ASTL8 ** 4,2+4,2 m aluminum boom arm, Ø 90 mm + joint + springs



PROFT6 Flexible rubber profile, 12 m and plug set (transparent)



PROFT8 Flexible rubber profile, 16 m and plug set (transparent)



CP-BR6 Anchorage plate with rag bolts

** for ASTL8 the combining of APFX is recommended



APM Mobile support RAL9010



APFX Fixed support RAL7047

ACCESSORIES



KLIGHT4,6,8 Led lights for 4m, 5-6 m and 6-8 m bar



CTLIGHT2 Control unit for KLIGHT



AD Red reflecting adhesive stripes



SKIRT2 Fence kit, 1,7m length



VEK-MNH1-R24-C Single channel magnetic loop detector



VEK-MNH2-R24-C Dual channel magnetic loop detector



EGKTR1 Touch keyboard via radio (Rolling Code)



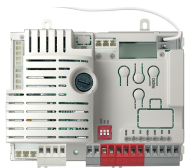
SUB Remotes 4 channel transmitter, XR rolling code 433MHz



ANTS-433 Blade antenna to 433MHz with steel bracket and RG-58 cable L: 5000mm



RXM23K 2 channel universal receiver, fix or rolling code, 1000 codes



CTI0324 Latest control unit for sliding gates and electromechanical barriers. Backward compatible with CTI0224.



KUBEU Bluetooth Low Energy module with two 5A relay outputs



FT33 Pair of photocells for external use and flush mounting



FT43 Pair of photocells for external use adjustable through 180°, for small pillars



RP25K Kit of reflective photocells for external use

ALT ROAD BARRIER INSTALLS

